

**Important Disclaimer**

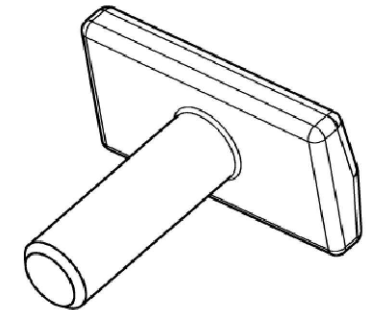
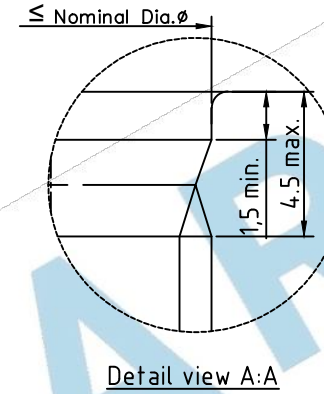
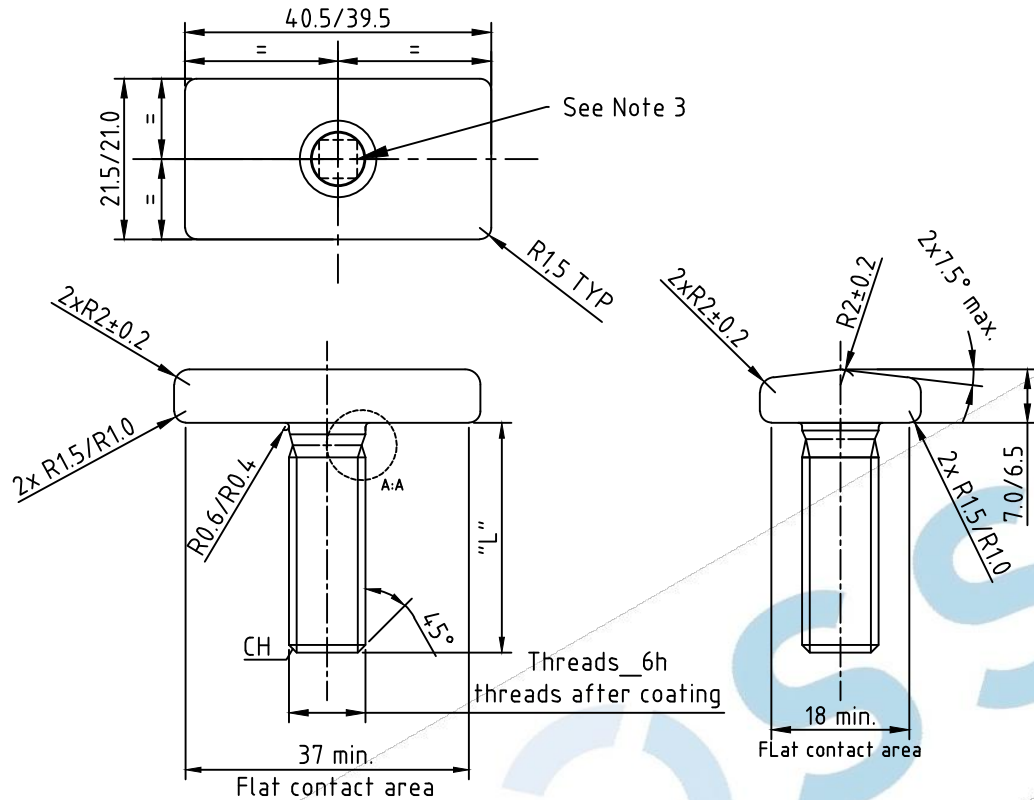
The technical recommendations contained in this publication are necessarily of a general nature and should not be relied on for specific applications without first securing competent advice. Whilst Bossard has taken all reasonable steps to ensure the information contained herein is accurate and current, Bossard does not warrant the accuracy or completeness of the information and does not accept liability for errors or omissions.

**LPS BOSSARD**

Business Unit

BIN

Cust part	Marking	Thread M	Length L	End chamfer CH	Ar Nr
100508450	2	M10	30.42/29.58	1.0-2.2	6446769
100523068	4	M12	45.5/44.5	1.5-2.5	6446772
100540359	5	M12	70.6/69.4	1.5-2.5	6446776



**NOTES:-**

- 1- BURRS & SHARP EDGES ARE NOT ALLOWED.
- 2- TEE BOLT TO BE BS 3692 GRADE 10.9
- 3- MARKING AND IDENTIFICATION TO BE STAMPED ON THE END OF THREADED SHAFT AS PER TABLE WITH TEXT HEIGHT 6.0 X 0.5 DEEP
- 4- COATING THICKNESS IS 8 MICRONS MIN. AND SST SHOULD BE 600 Hrs for RR
- 5- THREADS SHALL BE WITH 6H CLASS MATING NUT AFTER COATING

LPS Bossard Pvt. Ltd. Rohtak

**CONTROLLED COPY**

Date of Issue

18<sup>TH</sup> August, 2022

Controlling Authority  
Engineering Deptt.

rev.	Initial Release	ECN	Date	Drawing	Approved	Material	Customer Code	UNSPECIFIED TOLERANCES	All dimensions are in mm.
00	Initial Release		18-AUG-22	HIMANSHU	SOBHIT	Steel 10.9	104649	0~ ≤6 ±0.1	 Third angle projection
	Modificaton					Controlled hardness 35- 39 HRC	AS PER TABLE	6~ ≤30 ±0.2	
						Geomet 500A	AS PER TABLE	30~ ≤120 ±0.3	Version
							AS PER TABLE	±5°	
						Tee bolt	Not at Scale		02
							A4	QP Level Q2	